

## FLOORFINDER

### EXPRESS *aio*

Fast- and low-temperature-curing, slip-resistant polyaspartic coating, for light to medium chemical and medium mechanical loads with a wide colour spectrum and various surface structures. All operations with the same product - all-in-one (aio)

#### Application Fields

Ramps and spindles  
in parking garages

Stairways

Foyers

Exterior surfaces

Arcades

Loading ramps

Production areas

Storage areas

## SYSTEM BUILD UP

### FLOORFINDER

PU-S691 P

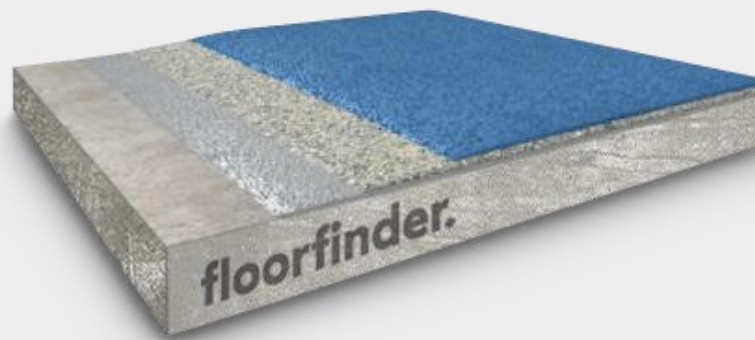
BROAD-  
CASTING  
LAYER



### FLOORFINDER

PU-S691 P

PRIMER



### FLOORFINDER

PU-S691 P

SEALER



## SYSTEM HIGHLIGHTS

1.0 – 2.5mm System thickness



UV and colour  
stable



Application and  
curing within a  
day



Low temperature  
curing –  
applicable from  
5°C



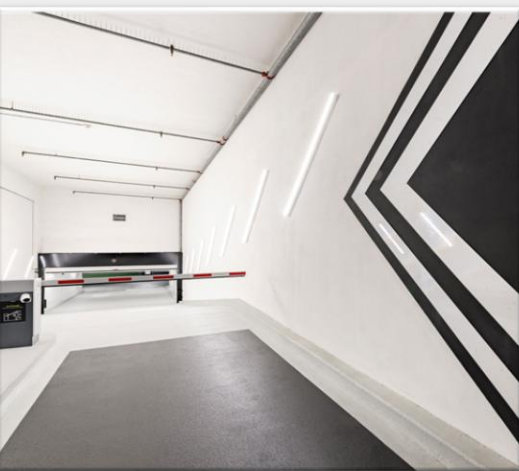
Low odor



Available in  
many colours



Defined slip  
resistance  
R10 –R12



## FLOORFINDER *EXPRESS aio*

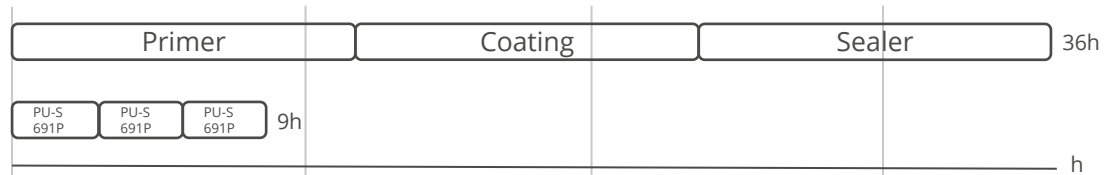
### Application and Consumption

Layer	Product	Consumption (kg/m <sup>2</sup> )	Sand broadcasting (kg/m <sup>2</sup> )	Thickness (mm)	Application
Pigmented sealer	FLOORFINDER PU-S691 P	0.5 – 1.0	none	0.35 – 0.8	rubber squeegee, roller
Broadcasting layer with quartz QNV	FLOORFINDER PU-S691 P	0.7 – 1.0	QNV2-ad (0.3 – 0.8 mm) or QNV3-ad (0.6 – 1.2 mm) in excess	1.0 – 1.8	notched trowel
Primer	FLOORFINDER PU-S691 P (Optional: Filled with 20% QNV0)	0.3 – 0.5 (without filling)	Optional QNV2-ad (0.3 – 0.8 mm) ca. 0.8 kg/m <sup>2</sup>	0.2 – 0.4 (without filling)	rubber squeegee, roller
Substrate	Cementitious substrates according to the appropriate standards and approvals must be capable of bearing loads and be free of cracks and voids. Pull-off strength $\geq 1.5$ N/mm <sup>2</sup> , residual moisture content $< 4$ %-CM, with higher residual moisture and on substrates with moisture from the backside special measures must be taken or a damp proof membrane must be installed. Substrate preparation e.g. grinding or shot blasting, sweeping and vacuum-cleaning is mandatory. Consumptions are calculated with FLOORFINDER quartz sands and fillers. Usage of other quartz sands and fillers can cause changes of consumption and technical data.				
Note	Detailed application instructions are available upon request or refer to the technical product data sheet.				

### System timeline (Assumed application conditions: 15°C, 40% rel. Humidity, 200m<sup>2</sup> area, ca.1h application per operation)

Standard industry floor coating

FLOORFINDER *EXPRESS aio*



### Technical Data



Property	Standard	Result
Shore-Hardness	DIN EN ISO 868	After 1d: D50 After 7d: D70
Adhesive tensile strength	DIN EN ISO 4624	$\geq 2,5$ N/mm <sup>2</sup> (concrete failure)
Impact strength	EN 13813, tested acc. EN ISO 6272-1	$\geq$ IR4
Abrasion resistance (Taber)	DIN ISO 9352	$\leq 1400$ mg (H22, 1000 cycles)
Chemical resistance	EN ISO 2812-4	Resistant against (among others): -Petrol (DIBt medium group 1) -Diesel/Heating oil (3) -Sulfuric acid 20% (10) -Detergent 50% (14)

Remark: for further information please refer to the product data sheets or contact our technical service. All data are approximate values. Therefore, no liability claims can be derived from the system data sheet. As all FLOORFINDER data sheets are updated on a regular basis it is the user's responsibility to obtain the most recent issue (see [www.floorfinder.com.my](http://www.floorfinder.com.my) or contact us directly)– all technical information is subject to change without prior notice. FLOORFINDER products are guaranteed against defective material and manufacture and are sold subject to its standard Terms and Conditions of Sale, copies which can be obtained on request.

#### Distributor:

Goodspeed America Inc., 24624 Interstate 45 North, Suite 200 • Spring, Texas 77386, U.S.A. | [bstorey@goodspeed-america.com](mailto:bstorey@goodspeed-america.com) | [www.goodspeed-america.com](http://www.goodspeed-america.com)

#### Manufacturer:

FLOORFINDER ASIA SDN. BHD. – A division of VIACOR VISION AG, SWITZERLAND | No. 28, Lorong Sungai Puloh 1A/KU6 | Jalan Sungai Puloh | Batu 5 3/4 Kapar | 42100 Klang | Selangor Darul Ehsan | Malaysia | Tel: +603 3290 7644 | [info@floorfinderasia.com](mailto:info@floorfinderasia.com) | [www.floorfinderasia.com](http://www.floorfinderasia.com)