

## FLOORFINDER PERM DECK

Slip resistant, water-vapour permeable epoxy advanced resin based coating system, low odour, low emission, hard-wearing, water-proof surface with good mechanical and chemical properties and a wide colour spectrum. According to DIN EN 1504-2 and DIN V 18026, class OS8.

### Application Fields

Workshops

Paper mills

Production areas

Metal working industry

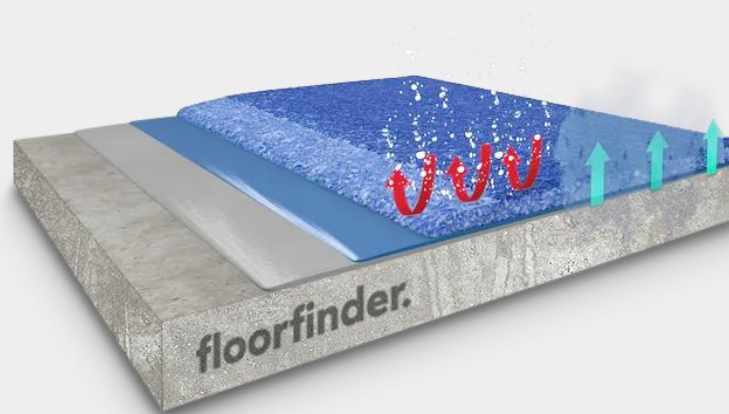
Areas with moisture sensitive substrates

Underground garages

Private apartments

Public buildings

## SYSTEM BUILD UP



### FLOORFINDER

EP-L380

WEAR  
COAT



### FLOORFINDER

EP-P285

PRIMER



### LINE MARKING

E.G PU or  
EPOXY



### FLOORFINDER

EP-S680

SEALER



## SYSTEM HIGHLIGHTS

1.5 – 3.0 mm System thickness



High water vapour permeable, no blistering due to hydrostatic pressure.



Seamless, liquid tight surfaces



Low emission acc. AgBB and other standards



OS 8  
EN 1504-2  
DIN V 18026



Good chemical resistance against gasoline and others



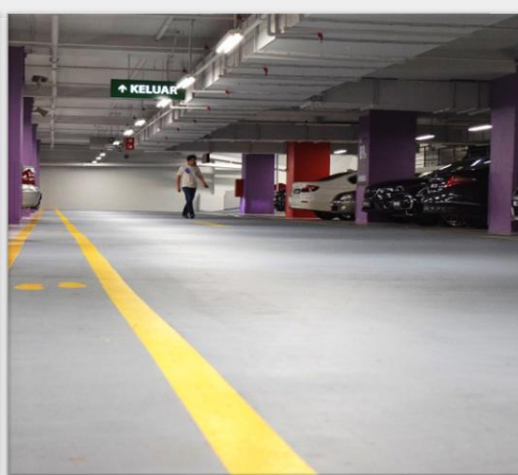
Extremely high mechanical load and impact resistance



Slip resistant surface for car and pedestrian traffic



Low odor



## FLOORFINDER *PERM DECK*

### Application and Consumption

Layer	Product	Consumption (kg/m <sup>2</sup> )	Sand broadcasting (kg/m <sup>2</sup> )	Thickness (mm)	Application
Sealer, coloured, semi gloss	FLOORFINDER EP-S680	0.6 – 0.9 + 3 - 5 % Water	none	0.5 – 0.8	roller or rubber squeegee + roller
Wear coat with broadcasting with QS	FLOORFINDER EP-L380	0.8 – 3.0	QS 0.3 – 0.8 In excess	0.5 – 1.6	trowel
Primer	FLOORFINDER EP-P285	0.3 – 0.4 + 15% Water	optional QS 0.3 – 0.8 0.3 – 0.5	0.15 – 0.3	roller
Substrate	Cementitious substrates according to the appropriate standards and approvals must be capable of bearing loads and be free of cracks and voids. Pull-off strength $\geq 1.5$ N/mm <sup>2</sup> , this system is water vapour permeable, max. residual moisture < 6 - 8% CM, for magnesite screed <10% CM, anhydrite max. 1% residual moisture, attention for underfloor-heating <0.3% CM, with higher residual moisture and on substrates with moisture from the backside special measures must be taken or a damp proof membrane should be installed. Substrate preparation e.g. grinding or shot blasting, sweeping and vacuum-cleaning is mandatory. Consumptions are calculated with FLOORFINDER quartz sands and fillers. Usage of other quartz sands and fillers can cause changes of consumption and technical data.				
Note	Detailed application instructions are available upon request or refer to the technical product data sheet.				

### Technical Data

Property	Standard	Result
Adhesive strength at T <sub>NORM</sub>	DIN EN 1542	$\geq 4,3$ N/mm <sup>2</sup> ( $\geq 2,0$ N/mm <sup>2</sup> )
Adhesive strength after freeze-thaw with de-icing salt	DIN EN 13687-1 and -2	$\geq 4,3$ N/mm <sup>2</sup> ( $\geq 2,0$ N/mm <sup>2</sup> )
Dynamic crack bridging (-20°C)	DIN EN 1062-7	NPD
Grip and slip resistant	DIN EN 13036-4 DIN 51130	60 Skt ( $\geq 55$ Skt) R11-V4 and R12-V6
Chemical resistance	DIN EN 13529	Test liquids DiBT Nr. 1, 3, 10
Abrasion resistance (H22 wheel)	DIN EN ISO 5470-1	1.903 mg /1000 U ( $\leq 3.000$ )
Carbon dioxide permeability	DIN EN 1062-6	Class III > 2.500 m (> 50 m)
Water vapour permeability	DIN EN ISO 7783-1 and -2	Class I > 4 m (< 5 m)
Water absorption coefficient	DIEN EN 1062-3	< 0,01 kg/m <sup>2</sup> x h0,5 (< 0,1)
Impact resistance	DIN EN ISO 6772-2	4 Nm – no cracks
Low emission	AgBB and M1	Fulfilled after 3 days
Fire Resistance	EN 13501-1	Bfl-S1

Remark: for further information please refer to the product data sheets or contact our technical service. All data are approximate values. Therefore, no liability claims can be derived from the system data sheet. As all FLOORFINDER data sheets are updated on a regular basis it is the user's responsibility to obtain the most recent issue (see [www.floorfinder.com.my](http://www.floorfinder.com.my) or contact us directly)– all technical information is subject to change without prior notice. FLOORFINDER products are guaranteed against defective material and manufacture and are sold subject to its standard Terms and Conditions of Sale, copies which can be obtained on request.

**Distributor:**

Goodspeed America Inc., 24624 Interstate 45 North, Suite 200 • Spring, Texas 77386, U.S.A. | [bstorey@goodspeed-america.com](mailto:bstorey@goodspeed-america.com) | [www.goodspeed-america.com](http://www.goodspeed-america.com)

**Manufacturer:**

FLOORFINDER ASIA SDN. BHD. – A division of VIACOR VISION AG, SWITZERLAND | No. 28, Lorong Sungai Puloh 1A/KU6 | Jalan Sungai Puloh | Batu 5 3/4 Kapar | 42100 Klang | Selangor Darul Ehsan | Malaysia | Tel: +603 3290 7644 | [info@floorfinderasia.com](mailto:info@floorfinderasia.com) | [www.floorfinderasia.com](http://www.floorfinderasia.com)