

FLOORFINDER

PERM

Water-vapour permeable epoxy advanced resin based coating system, low odour, low emission, hard-wearing, water-proof surface with good mechanical and chemical properties and a wide colour spectrum.

Application Fields

Public buildings

Logistic sites and warehouses

Hospitals

Areas with moisture sensitive substrates

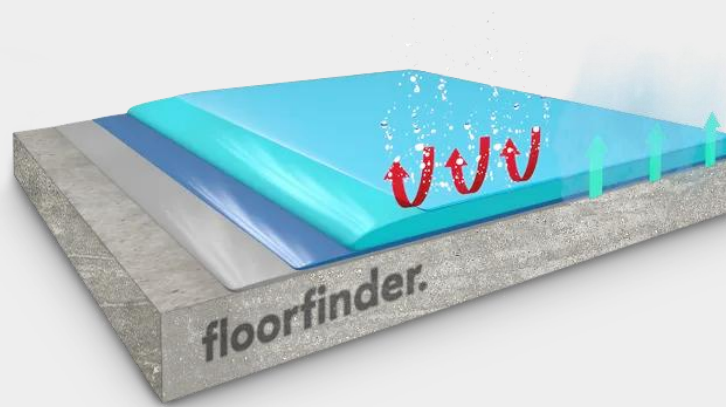
Production areas

Paper mills

Workshops

Metal working industry

SYSTEM BUILD UP



FLOORFINDER

EP-C580

SCRATCH COAT



FLOORFINDER

EP-P285

PRIMER



FLOORFINDER

EP-S680

SEALER



FLOORFINDER

EP-C580

SELF LEVELLING COATING



SYSTEM HIGHLIGHTS

2.0 – 5.0 mm System thickness



High water vapour permeable, no blistering due to hydrostatic pressure.



Impermeable to liquids



Low emission acc. AgBB and other standards



Bfl-s1 acc. EN 13501



Good chemical resistance



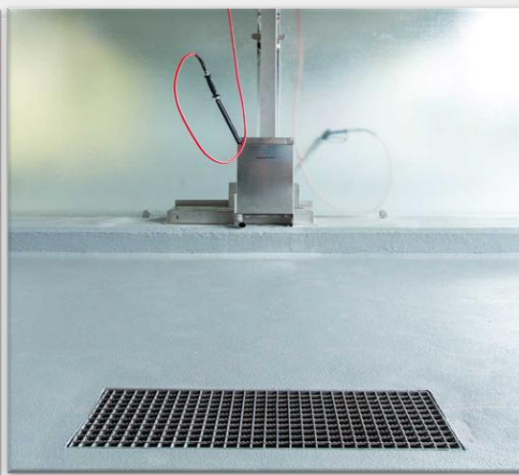
High abrasion resistance



High impact resistance



Low odor



FLOORFINDER *PERM*

Application and Consumption

Layer	Product	Consumption (kg/m ²)	Sand broadcasting (kg/m ²)	Thickness (mm)	Application
Sealer, semi-glossy or matt, coloured	FLOORFINDER EP-S680	0.25 – 0.3 + 3 - 5 % water	none	0.15 – 0.2	roller or rubber squeegee + roller
Self-levelling coating	FLOORFINDER EP-C580	1.8 – 6.0	Optional: colour chips	1.0 – 3.3	notched trowel + spike roller
Scratch coat, levelling layer (recommended)	FLOORFINDER EP-C580	1.8 – 2.3	none	1.0 – 1.3	trowel
Primer	FLOORFINDER EP-P285	0.3 – 0.4 + 15% Water	optional QS 0.3 – 0.8 0.3 – 0.5	0.15 – 0.3	roller
Substrate	Cementitious substrates according to the appropriate standards and approvals must be capable of bearing loads and be free of cracks and voids. Pull-off strength ≥ 1.5 N/mm ² , this system is water vapour permeable, max. residual moisture < 6 - 8% CM, for magnesite screed <10% CM, anhydrite max. 1% residual moisture, attention for underfloor-heating <0.3% CM, with higher residual moisture and on substrates with moisture from the backside special measures must be taken or a damp proof membrane should be installed. Substrate preparation e.g. grinding or shot blasting, sweeping and vacuum-cleaning is mandatory. Consumptions are calculated with FLOORFINDER quartz sands and fillers. Usage of other quartz sands and fillers can cause changes of consumption and technical data.				
Note	Detailed application instructions are available upon request or refer to the technical product data sheet.				

Technical Data

Property	Standard	Result
Compressive strength	EN 196 / ASTM C109	Ca 55 N/mm ²
Flexural strength	EN 196 /ASTM C109	Ca 16 N/mm ²
E-Modulus	DIN 53504	Ca 7000 N/mm ²
Shore-Hardness	DIN EN 868	D80 after 28 d
Water-vapour permeability	DIN 5261523/50-95	$\mu= 4000$
Adhesive strength	EN ISO 4624	> 2,5 N/mm ² (concrete failure)
Impact strength	EN 13813	≥ 4 Nm (IR4)
Wear resistance (Taber)	EN ISO 5470-1	≤ 80 mg
Low emission	E.g., AgBB, M1	Fulfilled after 3 days
Fire resistance	EN 13501-1	Bfl-S1

Remark: for further information please refer to the product data sheets or contact our technical service. All data are approximate values. Therefore, no liability claims can be derived from the system data sheet. As all FLOORFINDER data sheets are updated on a regular basis it is the user's responsibility to obtain the most recent issue (see www.floorfinder.com.my or contact us directly)– all technical information is subject to change without prior notice. FLOORFINDER products are guaranteed against defective material and manufacture and are sold subject to its standard Terms and Conditions of Sale, copies which can be obtained on request.

Distributor:

Goodspeed America Inc., 24624 Interstate 45 North, Suite 200 • Spring, Texas 77386, U.S.A. | bstorey@goodspeed-america.com | www.goodspeed-america.com

Manufacturer:

FLOORFINDER ASIA SDN. BHD. – A division of VIACOR VISION AG, SWITZERLAND | No. 28, Lorong Sungai Puloh 1A/KU6 | Jalan Sungai Puloh | Batu 5 3/4 Kapar | 42100 Klang | Selangor Darul Ehsan | Malaysia | Tel: +603 3290 7644 | info@floorfinderasia.com | www.floorfinderasia.com