

FLOORFINDER

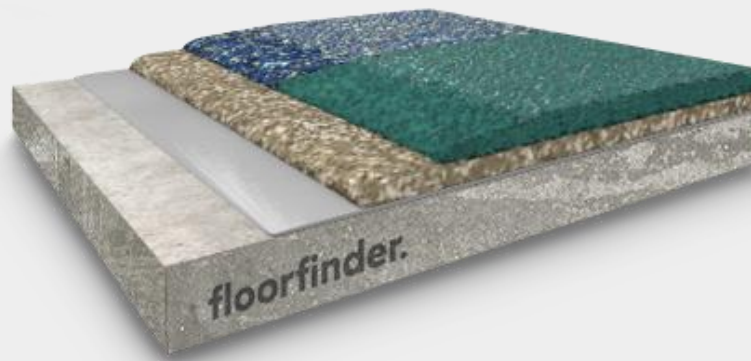
UNIFLEX cuisine SR

Slip resistant, tough-hard polyurethane based coating system, with light to medium wear resistance, thermal resistance until max. 60°C, statically crack-bridging and a wide variety of colours and surface structures. Tested in accordance with PG-AIV in application as top layer as well as underneath a mineral screed.

Application Fields

- Catering areas
- Kitchens
- Workstations with wet conditions
- Production areas in food and beverage industry

SYSTEM BUILD UP



FLOORFINDER
PU-L310

WATER-PROOFING LAYER

FLOORFINDER
EP-T703

PRIMER

FLOORFINDER
PU-S667 N P

SEALER

FLOORFINDER
PU-C501

BROADCASTING LAYER

SYSTEM HIGHLIGHTS

5.0 – 7.0 mm System thickness

High abrasion resistance

Seamless, liquid tight surfaces

Low emission acc. AgBB and other standards

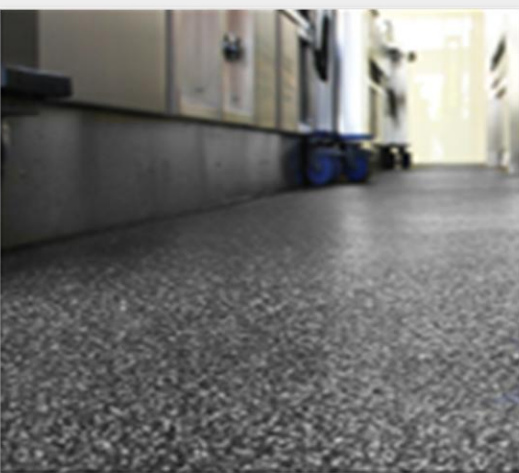
Hygienic

Excellent resistance against discolouration due to foodstuffs

Low temperature curing – applicable from 5°C

Slip resistance R10 – R12

Technical approval for industrial kitchens in accordance with testing standards AIV of the DIBt



FLOORFINDER *UNIFLEX cuisine SR*

Application and Consumption

Layer	Product	Consumption (kg/m ²)	Sand broadcasting (kg/m ²)	Thickness (mm)	Application
Sealer, transparent	FLOORFINDER PU-S667 N ¹ / FLOORFINDER PU-S691	0.5 – 1.0	none	0.4 – 0.8	Rubber squeegee, roller
Alternative: Sealer, coloured	FLOORFINDER UREA S6400 P or FLOORFINDER PU-S691 P				
Broadcasting layer, broadcasted with natural or coloured quartz sand	FLOORFINDER PU-C501 ¹	1.5 – 1.7	QNV-D (0.3-0.8 mm) / QCV In excess	2.2 – 3.0	notched trowel or squeegee
Waterproofing layer, statically crack-bridging	FLOORFINDER PU-L310 ¹	1.5 – 2.0	QS (0.3 – 0.8 mm) In excess ²	2.2 – 3.5	notched trowel or squeegee
Scratch coat, levelling layer (optional)	FLOORFINDER PU-L310/ FLOORFINDER PU-C501 (fillable 10-20% with QNV0)	0.8 – 2.0 (+ 80 – 400 QNV0)	none	0.5 – 2.0	trowel or rubber squeegee / notched trowel or notched squeegee
Primer	FLOORFINDER EP-T703 / FLOORFINDER EP-P210 ¹	0.3 – 0.5	QS (0.3-0.8 mm) 0.5	0.2 – 0.3	roller
Substrate	Cementitious substrates according to the appropriate standards and approvals must be capable of bearing loads and be free of cracks and voids. Pull-off strength ≥ 1.5 N/mm ² , residual moisture content < 4 %-CM, with higher residual moisture and on substrates with moisture from the backside special measures must be taken or a damp-proof membrane must be installed. Substrate preparation e.g. grinding or shot blasting, sweeping and vacuum-cleaning is mandatory. Consumptions are calculated with FLOORFINDER quartz sands and fillers. Usage of other quartz sands and fillers can cause changes of consumption and technical data.				
Note	Detailed application instructions are available upon request or refer to the technical product data sheet. ¹ System build-up with technical approval acc. to PG-AIV ² For a flat surface appearance, sanding of the broadcasted grain on the waterproofing layer is recommended (e.g. with Schwaborn ES 420S without weight ring, approx. 30 kg, with sanding sheet no. 16, in a crosswise motion, then vacuum dust-free).				

Technical Data

Property	Standard	Result
Compressive strength	EN 196 / ASTM C109	Ca. 51 N/mm ²
Flexural strength	EN 196 / ASTM C109	Ca. 59 N/mm ²
Strain	DIN 53504	Ca 10%
Shore-Hardness	EN ISO 868	D 65 nach 28d
Adhesive strength	EN ISO 4624	> 4.0 N/mm ² (concrete failure)
Impact strength	EN 13813	≥ 16 Nm (IR4)
Wear resistance (Taber, 1000 U, H22)	EN ISO 5470-1	≤ 90 mg incl. Sand
Chemical resistance	EN ISO 2812-1	Test liquids 3, 10, 11 (more upon request)
Slip resistance	DIN 51130	R10 V0, R11 V4, R12 V8
Fire resistance	DIN EN 13501-1	B _{fl} -s1

Remark: for further information please refer to the product data sheets or contact our technical service. All data are approximate values. Therefore, no liability claims can be derived from the system data sheet. As all FLOORFINDER data sheets are updated on a regular basis it is the user's responsibility to obtain the most recent issue (see www.floorfinder.com.my or contact us directly)– all technical information is subject to change without prior notice. FLOORFINDER products are guaranteed against defective material and manufacture and are sold subject to its standard Terms and Conditions of Sale, copies which can be obtained on request.

Distributor:

Goodspeed America Inc., 24624 Interstate 45 North, Suite 200 • Spring, Texas 77386, U.S.A. | bstorey@goodspeed-america.com | www.goodspeed-america.com

Manufacturer:

FLOORFINDER ASIA SDN. BHD. – A division of VIACOR VISION AG, SWITZERLAND | No. 28, Lorong Sungai Puloh 1A/KU6 | Jalan Sungai Puloh | Batu 5 3/4 Kapar | 42100 Klang | Selangor Darul Ehsan | Malaysia | Tel: +603 3290 7644 | info@floorfinderasia.com | www.floorfinderasia.com