

FLOORFINDER DECK 8

Park deck coating system with statically crack-bridging properties (up to class A3, -10°C). For closed multi storey car parks on intermediate decks and ramps. System following class OS 8.

Application Fields

Closed car parks and underground garages
up to -10°C

Ramps and spiral ramps

SYSTEM BUILD UP

FLOORFINDER

PU-L300 V

CRACK
BRIDGING
BROADCASTING
LAYER



FLOORFINDER

EP-P210

PRIMER



LINE MARKING

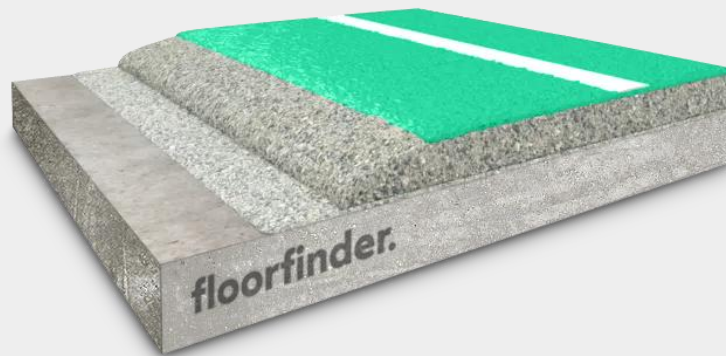
E.G PU or
EPOXY



FLOORFINDER

EP-S602

TOP COAT



SYSTEM HIGHLIGHTS

2.5 – 3.0 mm System thickness



Statically
crack bridging
class A3 or A2



High abrasion
resistance



Good
chemical
resistance



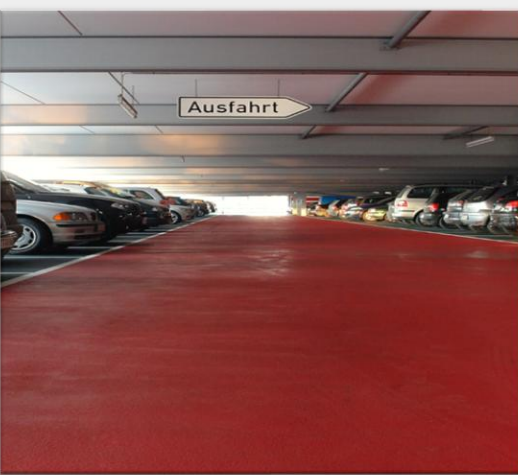
Fire resistance
class B_{f1-s}1



Available in
many colours



Slip resistance
for pedestrian
and vehicular
traffic

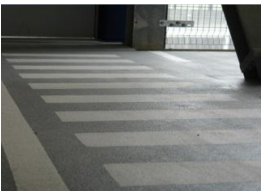


FLOORFINDER **DECK 8**

Application and Consumption

Layer	Product	Consumption (kg/m ²)	Sand broadcasting (kg/m ²)	Thickness (mm)	Application
Sealer	FLOORFINDER EP-S602	0.6 – 0.9	none	0.5 – 0.7	Rubber squeegee, roller for finish
Wear coat crack-bridging	FLOORFINDER PU-L300 V	1.3 – 1.5	QS 0.3-0.8 oder 0.6-1.2 mm In excess	min. 2.1	Notched trowel, Rubber trowel
(Alternative) wear coat highly crack-bridging	FLOORFINDER PU-L2000	1.8 – 2.2		min. 3.6	Notched trowel
(optional) Scratch coat, levelling	FLOORFINDER EP-T703 + QS 0.1 – 0.4 mm	0.5 – 1.5 + QS 25–150 %	QS 0.3-0.8 mm In excess	0.5 – 1.5	Notched trowel, roller for finish
Primer	FLOORFINDER EP-T703 or others	0.6 – 0.9	QS 0.3-0.8 mm, 0.5-0.8 kg/m ²	ca. 0.3	Roller or rubber squeegee
(Optional) Blocking primer ≤ 6 % CM	FLOORFINDER EP-P210 or EP-T703	0.4 – 0.6	none	ca. 0.3	roller or rubber squeegee
Substrate	Cementitious substrates according to the appropriate standards and approvals must be capable of bearing loads and be free of cracks and voids. Pull-off strength ≥ 1.5 N/mm ² , residual moisture content < 4 %-CM, with higher residual moisture and on substrates with moisture from the backside special measures must be taken or a damp proof membrane must be installed. Substrate preparation e.g. grinding or shot blasting, sweeping and vacuum-cleaning is mandatory. Consumptions are calculated with FLOORFINDER quartz sands and fillers. Usage of other quartz sands and fillers can cause changes of consumption and technical data				
Note	Detailed application instructions are available upon request or refer to the technical product data sheet.				

Technical Data



Property	Standard	Result
Adhesive strength at T _{NORM}	DIN EN 1542	≥ 2.5 N/mm ² (≥ 1.5 N/mm ²)
Adhesive strenght after freeze-thaw with de-icing salt	DIN EN 13687-1 and -2	2.1 N/mm ² (≥ 1.5 N/mm ²)
Statically crack bridging (-10°C)	DIN EN 1062-7	PU-L300 V: min. 0.25 mm (A2) PU-L2000: min. 0.5 mm (A3)
Grip and slip resistance	DIN EN 13036-4 DIN 51130	57 Skt (≥ 55 Skt) R11-V4 and R12-V6
Chemical resistance	DIN EN 13529	Test liquids DiBT Nr. 1, 3, 10
Abrasion resistance (H22 Rad)	DIN EN ISO 5470-1	2.100 mg /1000 U (≤ 3.000)
CO ₂ -permeability	DIN EN 1062-6	Class III > 1.200 m (> 50 m)
Water vapor permeability	DIN EN ISO 7783-1 and -2	Class III > 150 m (> 50 m)
Water absorption coefficient	DIEN EN 1062-3	< 0.01 kg/m ² x h ^{0.5} (< 0.1)
Impact resistance	DIN EN ISO 6772-2	4 Nm – no cracks
Fire behavior class system	DIN EN 13501-1	B _{fl} -s1

Remark: for further information please refer to the product data sheets or contact our technical service. All data are approximate values. Therefore, no liability claims can be derived from the system data sheet. As all FLOORFINDER data sheets are updated on a regular basis it is the user's responsibility to obtain the most recent issue (see www.floorfinder.com.my or contact us directly)- all technical information is subject to change without prior notice. FLOORFINDER products are guaranteed against defective material and manufacture and are sold subject to its standard Terms and Conditions of Sale, copies which can be obtained on request.

Distributor:

Goodspeed America Inc., 24624 Interstate 45 North, Suite 200 • Spring, Texas 77386, U.S.A. | bstorey@goodspeed-america.com | www.goodspeed-america.com

Manufacturer:

FLOORFINDER ASIA SDN. BHD. – A division of VIACOR VISION AG, SWITZERLAND | No. 28, Lorong Sungai Puloh 1A/KU6 | Jalan Sungai Puloh | Batu 5 3/4 Kapar | 42100 Klang | Selangor Darul Ehsan | Malaysia | Tel: +603 3290 7644 | info@floorfinderasia.com | www.floorfinderasia.com